



FORMER ROYAL ADELAIDE HOSPITAL SITE

Stage One Demolition and Redevelopment Works Update

NO.1 FEBRUARY 2018

Welcome to the first edition of the former Royal Adelaide Hospital Site Stage One Demolition and Redevelopment Works Update.

During Stage One Demolition and Redevelopment Works, updates will be produced every two months to provide information about milestones, upcoming demolition activities and other Renewal SA on-site activations.

Updates will be circulated to properties near the site and emailed or posted to interested persons who register to join the mailing list (see details on the back page).

BACKGROUND

In previous correspondence, we advised Renewal SA is overseeing the redevelopment of this iconic site on North Terrace to create a world-class research, innovation and community precinct and major destination within the Adelaide Riverbank.

The demolition and remediation will be completed in stages with the first stage taking up to a year.

South Australian family-owned business McMahon Services has been selected as the preferred contractor to manage all of the demolition works for this first stage, which involves the demolition of the following buildings: East Wing, Hone Wing and Cobalt Wing, and Emergency Link.

CONSTRUCTION ACTIVITIES COMPLETED BETWEEN NOVEMBER 2017 - JANUARY 2018

- Established the site compound, temporary fencing, erection of scaffolding and commenced services investigation works.
- Disconnected the services within the buildings to be demolished.
- Site security was set up and remediation works were carried out on the North Terrace car park.
- The internal strip (soft demolition) commenced throughout the site. This included removal of all loose items within the buildings.
- Installation of the scaffolding and building wrap was completed at the end of December 2017.
- Service isolation work commenced.
- Removal of Amosite, Crocidolite and Chrysotile Asbestos on all levels of the Cobalt Wing commenced.

UPCOMING WORKS IN FEBRUARY - MARCH 2018

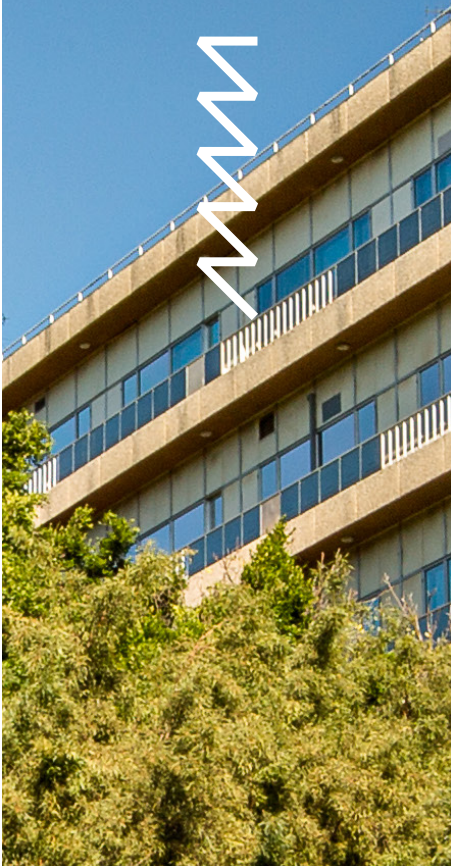
- Continuing removal of Amosite, Crocidolite and Chrysotile Asbestos on all levels of the Cobalt Wing.
- Continuing service isolation works.
- The internal strip (soft demolition) is continuing throughout the site until the end of March. This includes removal of all loose items within the East, Cobalt and Hone wings.
- A series of crane lifts will occur to remove the roof infrastructure along the eastern laneway from early February.
- Protection scaffolding will be installed along the eastern laneway (near Botanic Garden) to ensure safety of the public is maintained during demolition works and will remain in place until the end of June 2018.
- Demolition works will begin on the Cobalt Wing at the end of February 2018. Refer to the Stage One Demolition Timeline opposite for further details.

WORKING HOURS

Demolition activities will generally be undertaken from Monday to Friday - 7:00am to 5:30pm

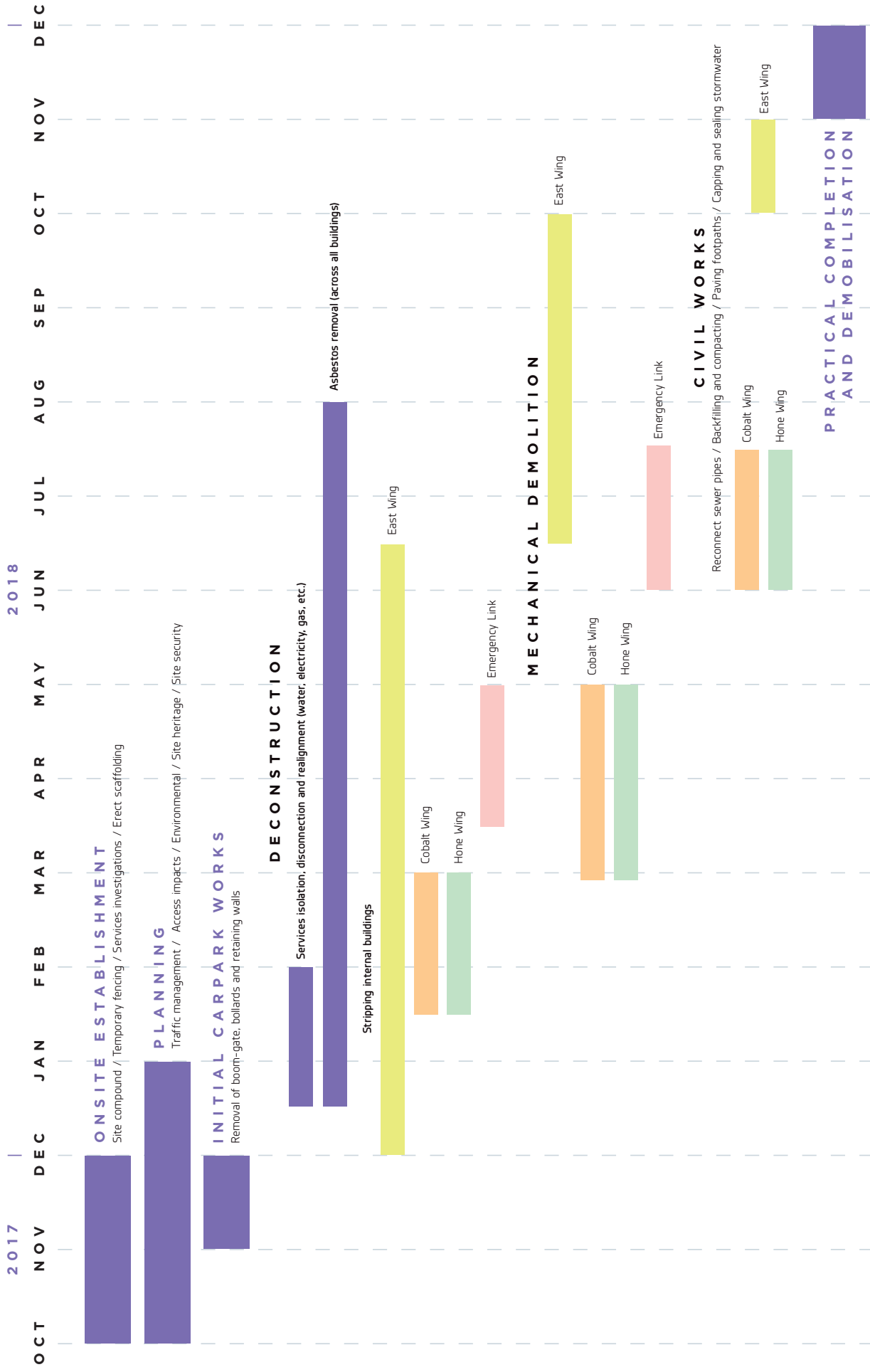
Saturday - 7:00am to 3:30pm

There may be a requirement throughout the project to undertake some Sunday and night works. If this occurs, you will be provided with advance notice of the activities and timing.



STAGE ONE DEMOLITION TIMELINE

FORMER ROYAL ADELAIDE HOSPITAL SITE



Indicative schedule - program subject to change.

UPCOMING ON-SITE ACTIVATIONS

Sunset Sounds will be held each Friday night during February from 5:30pm to 8:30pm. Enjoy South Australian musicians and enjoy a light bite to eat or a drink before heading off to dinner or shopping in the East End.

TAFE SA Graduation Fashion Parade will take place on the balcony of Margaret Graham Building and the adjoining laneway. The laneway will only be accessible to pedestrians on Thursday 8 February from mid-morning through to 9pm for set-up.

Throughout February and March, Renewal SA is partnering with the Adelaide Fringe to activate the site and surrounds.

- ▶ An Adelaide Fringe ticket collection machine was installed in December 2017, encouraging visitors to come past the site on their way to performances in the parklands and East End.

- ▶ The **Parade of Light** is a spectacular corridor of light that will illuminate buildings along North Terrace connecting the eastern parklands with the Adelaide Riverbank.

- ▶ **Lot 14** featuring food and beverage vendors, music and live entertainment. Thursday to Sunday, starting Friday 16 February, until 18 March.

- ▶ **Fringe on World Tour** will focus on families and children's entertainment as a range of artists will perform in the North Terrace facing courtyard and to the world through the Adelaide_Portal. Join us to enjoy food and beverage offerings from on-site tenants and East End traders and a range of children's activities on Saturday 17 and 24 February and Saturday 10 and 17 March.

MAKE AN ENQUIRY

For further information about the demolition works please call the Demolition Enquiries Line: [1300 336 678](tel:1300336678)

Email: demolition@formerRAH.com.au

For information about future plans for the former Royal Adelaide Hospital Site activations and events, visit renewalsa.sa.gov.au/formerRAH

Email: formerRAH@sa.gov.au

JOIN THE WORKS UPDATE MAILING LIST

To receive correspondence about Stage One Demolition Works please send your email and or postal contact details to: demolition@formerRAH.com.au

SPECIAL VIEWING OPPORTUNITY TO SEE DEMOLITION WORKS IN PROGRESS

A viewing platform will be established on site to enable general public to view the demolition and redevelopment works in progress.

Special viewing times will be set and invitations to be one of the first to attend will be sent out to people who register their interest.

Register your interest by the end of February via email demolition@formerRAH.com.au Provide your name, phone number and insert the words 'special viewing platform' in the subject field of the email.

We will contact you directly with further information when it becomes available.